

Glass Earth Gold

EXPLORATION OVERVIEW

2009/10



TSX.V: GEL

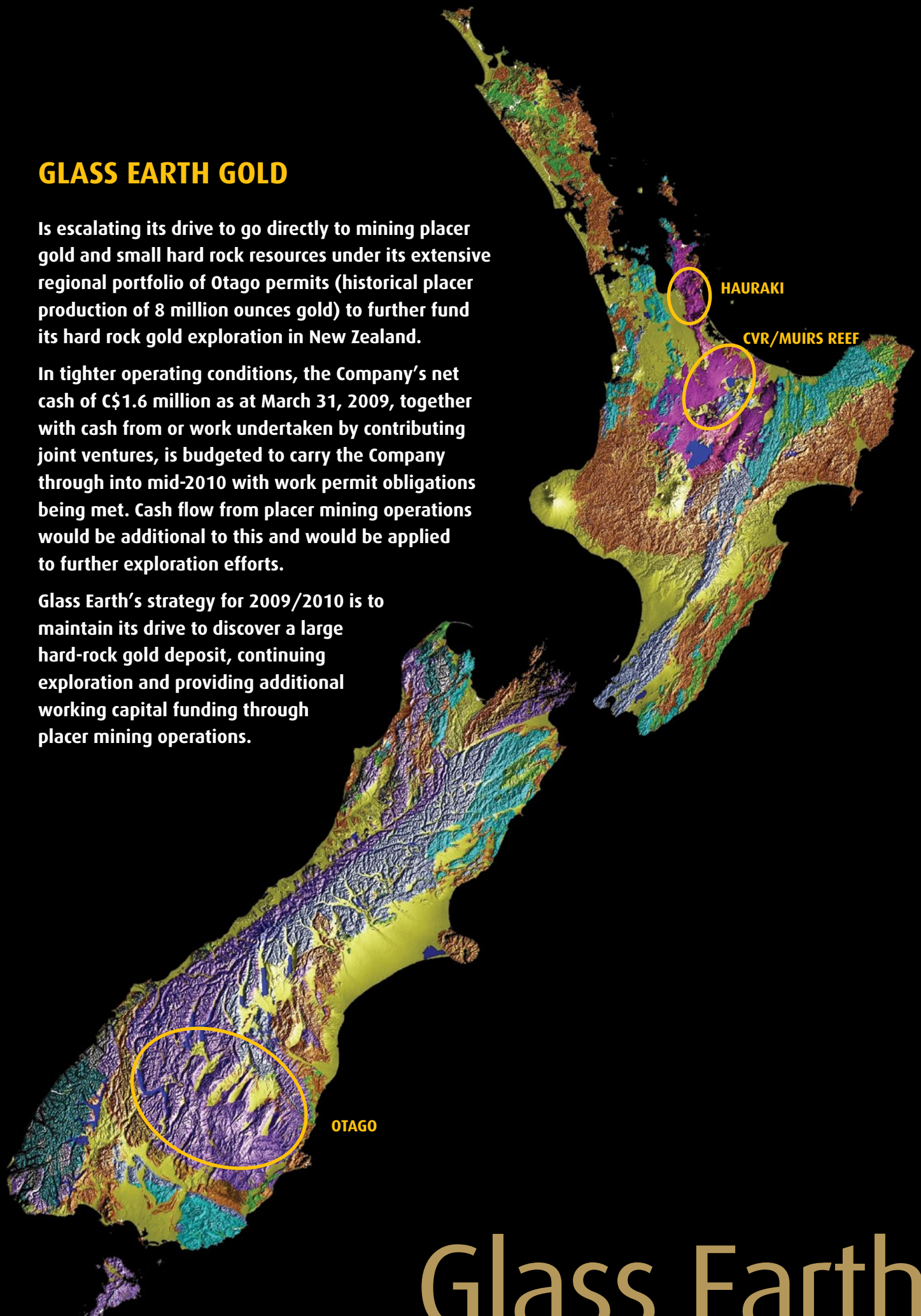
NZAX: GEL

GLASS EARTH GOLD

Is escalating its drive to go directly to mining placer gold and small hard rock resources under its extensive regional portfolio of Otago permits (historical placer production of 8 million ounces gold) to further fund its hard rock gold exploration in New Zealand.

In tighter operating conditions, the Company's net cash of C\$1.6 million as at March 31, 2009, together with cash from or work undertaken by contributing joint ventures, is budgeted to carry the Company through into mid-2010 with work permit obligations being met. Cash flow from placer mining operations would be additional to this and would be applied to further exploration efforts.

Glass Earth's strategy for 2009/2010 is to maintain its drive to discover a large hard-rock gold deposit, continuing exploration and providing additional working capital funding through placer mining operations.

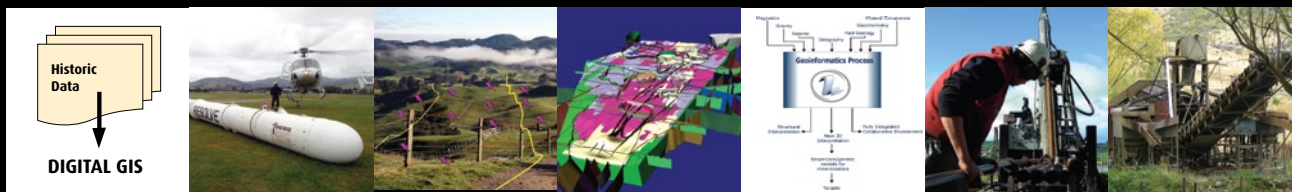


Glass Earth

Glass Earth Gold continues with its objective to discover new large gold deposits in New Zealand, via its superior exploration strategy using new technology, new data and risk managed targeting within whole provinces permissive for world class gold deposits (Glass Earth is the largest onshore exploration and prospecting permit holders in New Zealand (over 17,000 km²).

ADVANCED EXPLORATION TARGETS

Prospect	Reconn- aissance Exploration, Access	Resistivity, mapping, geochemistry well advanced	Drill ready	Drilling in Progress/ On-going Drilling	Potential Small Mine Resource evaluation
Hauraki (Newmont JV) North Island					
Goldwyn				●	
Wharekiriponga			●		
Glamorgan		●			
Mamaku North Island					
Muir/Gibraltar/Otawa		●	●	●	
Central Volcanic Region North Island					
Pukemoremore				●	
HoroHoro					
Tahunaatara				●	
Ohakuri				●	
Otago South Island					
Serpentine			●		
Game Hen		●			
Sheep Wash				●	
Fruidburn	●				
Waipori					
<i>Potential Small high grade veins/resource evaluation</i>					
Ophir					●
Sparrowhawk					●
Hindon/Game Hen		●			
Lots Wife/Nenthorn		●			
Waipori	●				
Old Man Range	●				
Nokomai	●				
Placer South Island					
McAdie					●
Star Trek				●	
Wallace, Ida Valley				●	
St Bathans	●		●		



Legacy data collation

Airborne data collection

On-ground surveying

3-4D modelling

Targeting & Ranking

Drilling

Mining

Gold Limited New Zealand

North Island Epithermal prospects on schedule for drilling

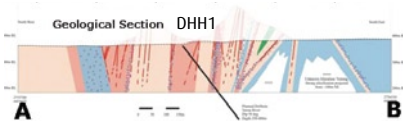
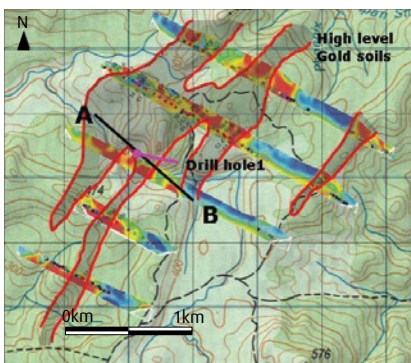
Glass Earth's NORTH ISLAND exploration has focused on the discovery of a major new epithermal gold deposit in the style of Newmont's Martha Hill Gold mine, Waihi, New Zealand (currently producing at approx 150,000 oz gold per annum, with over 10 million ounces gold and silver recovered over its lifetime). Newmont's Waihi based team manages Glass Earth's Hauraki exploration under the terms of a Joint Venture.



GOLDWYN PROSPECT (WENTWORTH/GLAMORGAN)

This high level epithermal gold system lies 16km from Martha gold mine's Waihi processing plant. In situ rock chips (3.63, 4.91, 5.28, 8.79, 10.50, 16.60, 20.30 g/t gold) represent several veined and silicified outcrops through rugged bush. A 2km long zone of +50ppb gold in soils (max 356ppb gold) blankets a zone of high resistivity, and remains open in both directions. Drilling has commenced on a 4 hole drilling programme.

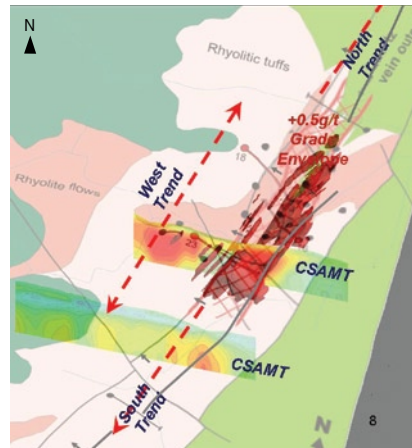
Goldwyn gold soil geochemistry on resistivity profiles (red = high gold/resistivity)



WHAREKIRIPONGA (WKP)

This classic epithermal gold system lies 5km north east of Golden Cross Deposit (634,000 oz gold production 1990's) and 11kms in a direct line to Newmont's Martha Gold mine's Waihi processing plant. This project lies in rugged bush and is technically challenging to explore, however planning is in advanced stages to have this project drill tested following the Goldwyn project.

WKP Geology on resistivity stacked profiles and gold isosurface (0.5ppm)



Significant legacy/GEG core intercepts include:

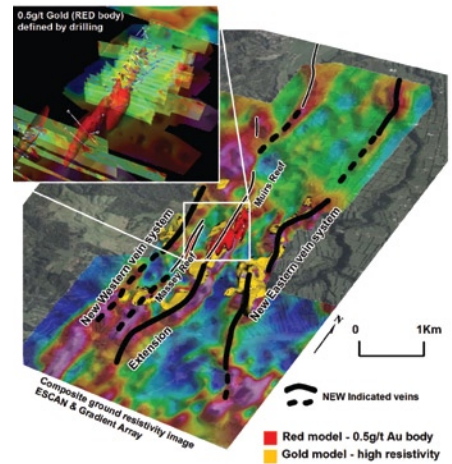
- 150m @ 0.93g/t Au including 17.7 m @ 4.0 g/t Au from DDH4
- 17.1m @ 3.87g/t Au
- 2.3m @ 15g/t Au
- 2.3m @ 24g/t Au
- 2.0m @ 7.7g/t Au
- 3.1m @ 9.7g/t Au
- 1.0m @ 48g/t Au

Mineralisation is open along strike in both directions.

MUIRS REEF

The Historic Muirs Reef Gold deposit has been the focus of preliminary drilling, ground mapping and resistivity surveying over the past twelve months. Encouraging drill results in and around the old workings, and studies that indicate that we are in the high levels (ie there has been no erosion) of an intact complex epithermal alteration system.

Muirs Reef 3D resistivity/gold isosurface



Significant legacy/GEG core intercepts include:

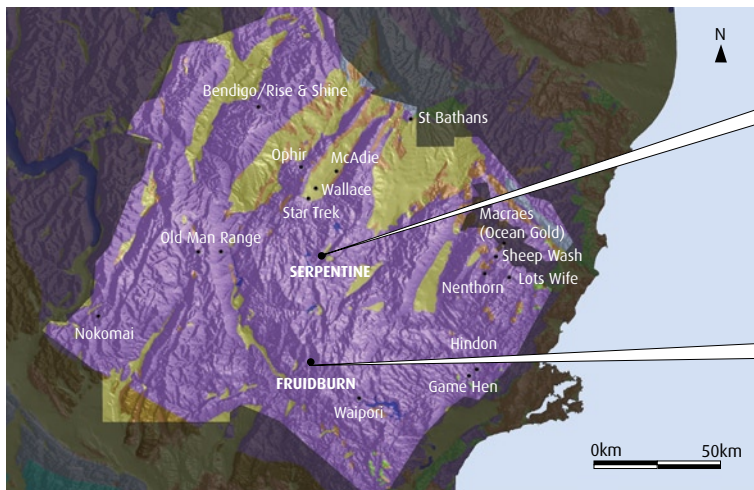
- 30m @ 1.2g/t Au, from MSDDH01
- 16m @ 1.1g/t Au, from MSDDH02
- 20m @ 4.9 g/t Au
- 20m @ 3.6 g/t Au
- 8m @ 3.4 g/t Au
- 22 @ 2.8 g/t Au
- 9m @ 2.7 g/t Au
- 1m @ 358 g/t Au

Encouraging rock chips (1-6 g/t gold) and soil geochemistry (up to 454 ppb gold) indicate that two new potential vein systems enveloping the Muirs/Massey veins are gold mineralised; and this project remains a key gold prospect for Glass Earth.

steps closer to placer

South Island Mesothermal prospects being advanced. Potential for cash flow from placer resources

In January 2009 Glass Earth Gold Ltd. (GEL) completed a comprehensive process of data compilation, data processing, and creation of new interpretations and exploration targets for the Central Otago Mesothermal gold district.



At **SERPENTINE**; detailed mapping and additional individual rock chips returning up to 31g/t gold, and 2.1g/t gold in soils) confirm the exciting potential of this extensive shear-hosted gold mineralised system.

At **FRUIDBURN PROSPECT** Detailed stream sediment surveying is focussed on a 10km x 7km area where sampling of a 540ppb BLEG (bulk leach extractable gold) sample returned 86 grains of gold in pan concentrate, derived very close to source. Coincident magnetic and resistivity anomalies rank this target highly.

THE GLASS EARTH GOLD OTAGO INTERVENTION

New data collected using advanced airborne mapping technology, collated with a significant new regional geochemical database has provided completely new insights into the prospectivity of the region.

This work has outlined the huge but exciting task ahead of the Glass Earth team, to convert this new knowledge into new discoveries:

Target concepts which are being incorporated into exploration programmes are addressing:

1. Large tonnage/ounce resource in relation to unoxidised shear-related mineralisation,
2. Small, multiple, high grade, oxidised ore deposits



High grade gold, Type IV quartz; in situ **Ophir**.

Advanced projects such as Serpentine, and new high priority greenfields prospects like Fruidburn form two of 15 highly ranked prospects that are scheduled for detailed exploration activities.

In addition conceptual modelling combined with practical hard rock geochemical data has highlighted that in many cases low angle shear related mineralisation is overprinted by small multiple high grade quartz veins host to coarse gold.

These shallow high grade oxide ore systems are being examined to determine their potential to contribute to hard rock gold production via a mobile crushing and gravity separation plant.

At Ophir, multiple low angle mineralised shears are overprinted by small multiple high grade oxidised quartz veins host to coarse gold.

Historical drilling, trenching and rock chip sampling and limited underground workings show potential for the recovery of this high grade mineralisation by gravity separation.

Ophir and Sparrowhawk present opportunities to go directly to mining of these shallow high grade oxide ores, and in combination with other prospects held by Glass Earth (Game Hen, Serpentine, Nenthorn, Lots Wife, et al) could provide sufficient gold resources to support production from a mobile plant.

PLACER EVALUATION

Glass Earth geologists have identified that the vectors to the major mineralising structures, recognized to host significant hard rock gold, lie directly under placer gold mineralisation. 175 shallow RC holes have been completed in the Ida Valley region, leading to the focus of initial attention on the McAdie Prospect, Poolburn.

Bulk testing of the McAdie Prospect as a precondition to placer production in Central Otago is scheduled to commence as soon as requisite land use and water use consents are in place. Securing equipment and experienced local personnel for potential placer mining operations is well advanced.

Glass Earth's extensive permit coverage places it in a superior position to avail itself of these opportunities. Subject to the success of bulk testing and permit approvals, Glass Earth could be placer mining by the Canadian fall (Sept/Oct 2009).



GEG's GRU (gold recovery unit) photographed here in the Cadrona Valley, Central Otago. (cover photo).

and hardrock mining

CORPORATE INFORMATION

For more information about our services, please contact us.

Canada

investor@glassearthlimited.com
Lindsay@chfir.com
Ph 416 868 107 ext 239

New Zealand

Investor@glassearth.co.nz
Ph +64 4 903 4980
PO Box 10-479 The Terrace, 6143
Wellington New Zealand

Or visit our website at:
www.glassearthgold.com

DIRECTORS

Simon Henderson
President and Chief Executive Officer
Wellington
New Zealand

Peter Liddle
Chief Financial Officer
Auckland
New Zealand

John Dow
Chairman and Non-executive Director
Nelson
New Zealand

Richard Billingsley
Non-executive Director
Vancouver
British Columbia
Canada

Stephen Burns
Non-executive Director
Toronto
Ontario
Canada

Paul C. Jones
Non-executive Director
Golden
Colorado
USA

SHAREHOLDERS' INFORMATION

Stock Exchange Listings

- TSX Venture Exchange
- New Zealand Alternative Market

Symbol: GEL

EXECUTIVE OFFICE

New Zealand

Level 4, Munro Bengo House
104 The Terrace
PO Box 10-479
Wellington

Telephone: +64 4 903 4980
Fax: +64 4 903 4985

Canada Contact

CHF Investor Relations
90 Adelaide St W. Suite 600
Toronto, ON M5H 3V9
Telephone: 416-868-1079 ext. 239
Email: Lindsay@chfir.com

REGISTRARS AND TRANSFER AGENTS

Computershare Investor Services Inc.

- Vancouver, British Columbia, Canada
- Auckland, New Zealand

LEGAL COUNSEL

Canada

Salley Bowes Harwardt LLP
Barristers and Solicitors
Vancouver, British Columbia

New Zealand

Morrison Daly
Wellington, New Zealand



TSX.V: GEL
NZAX: GEL