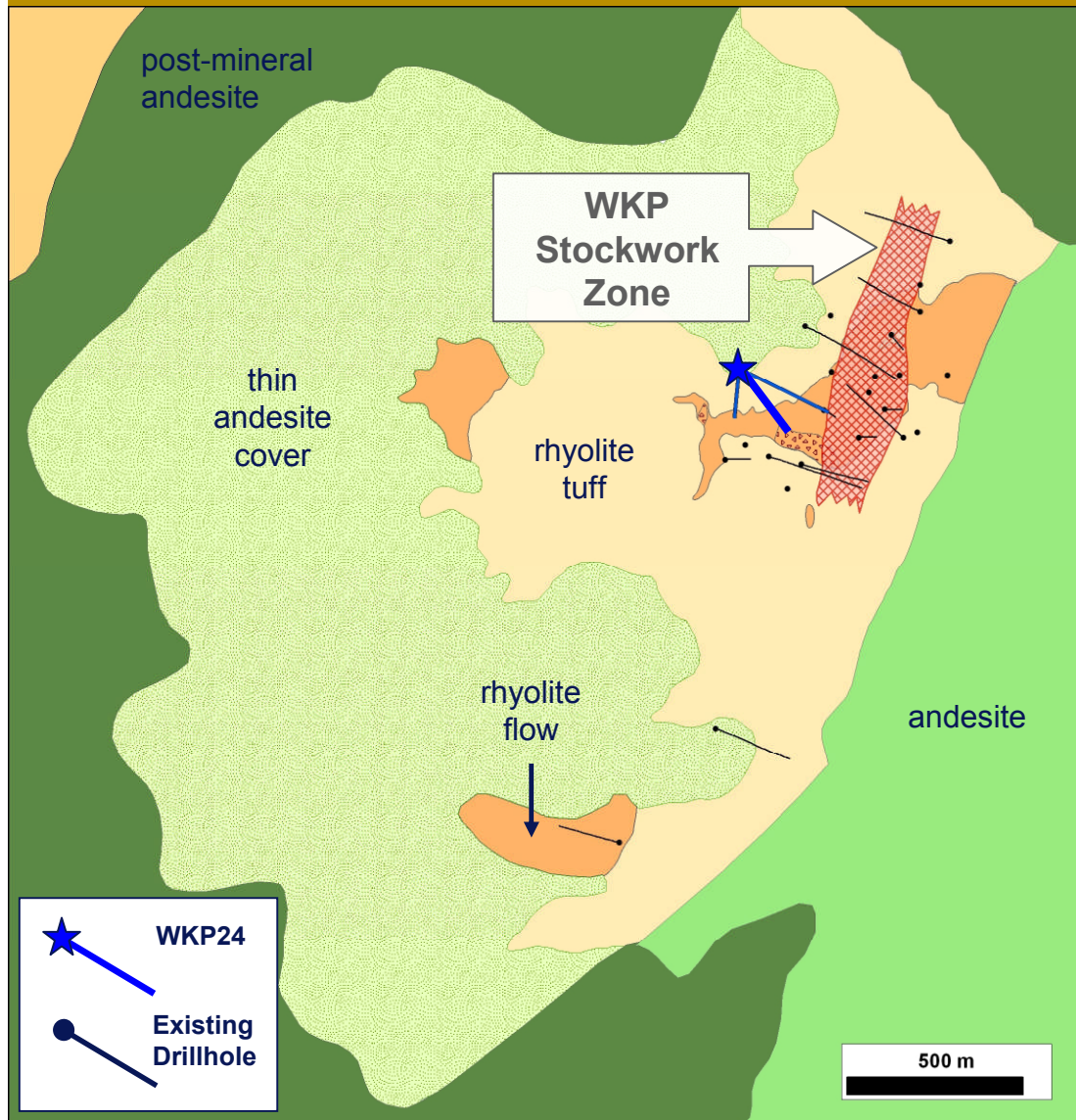


A horizontal band with a Maori pattern, including a central face with large eyes and various geometric designs, is positioned above the title.

2010 Hauraki JV Exploration Program

July 2010 Status and Outlook

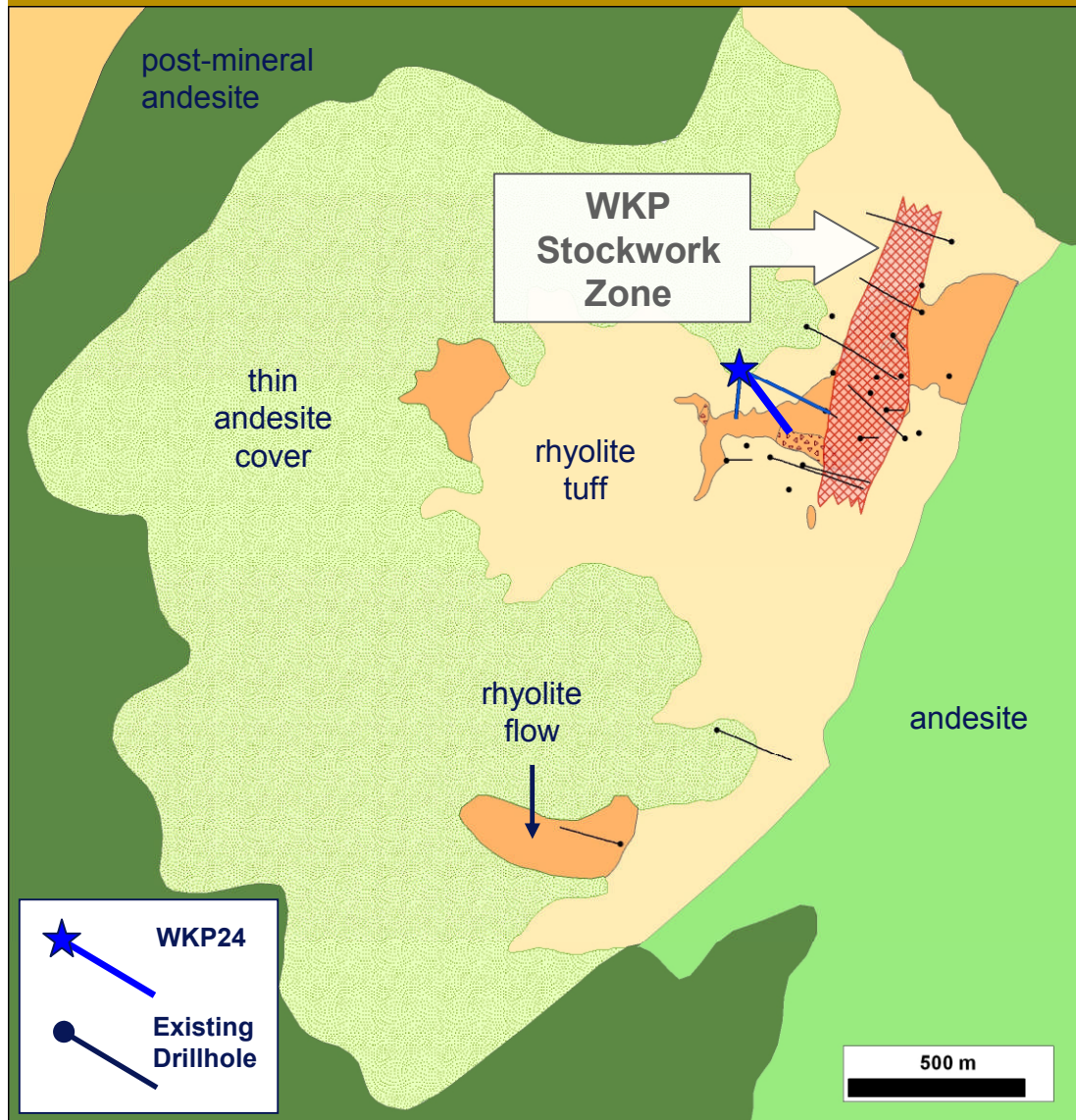
WKP: Previous Exploration



- Extensive exploration 1978-1993.
- Targeting previously mapped WKP stockwork vein zone.
- 5500m previous drilling.

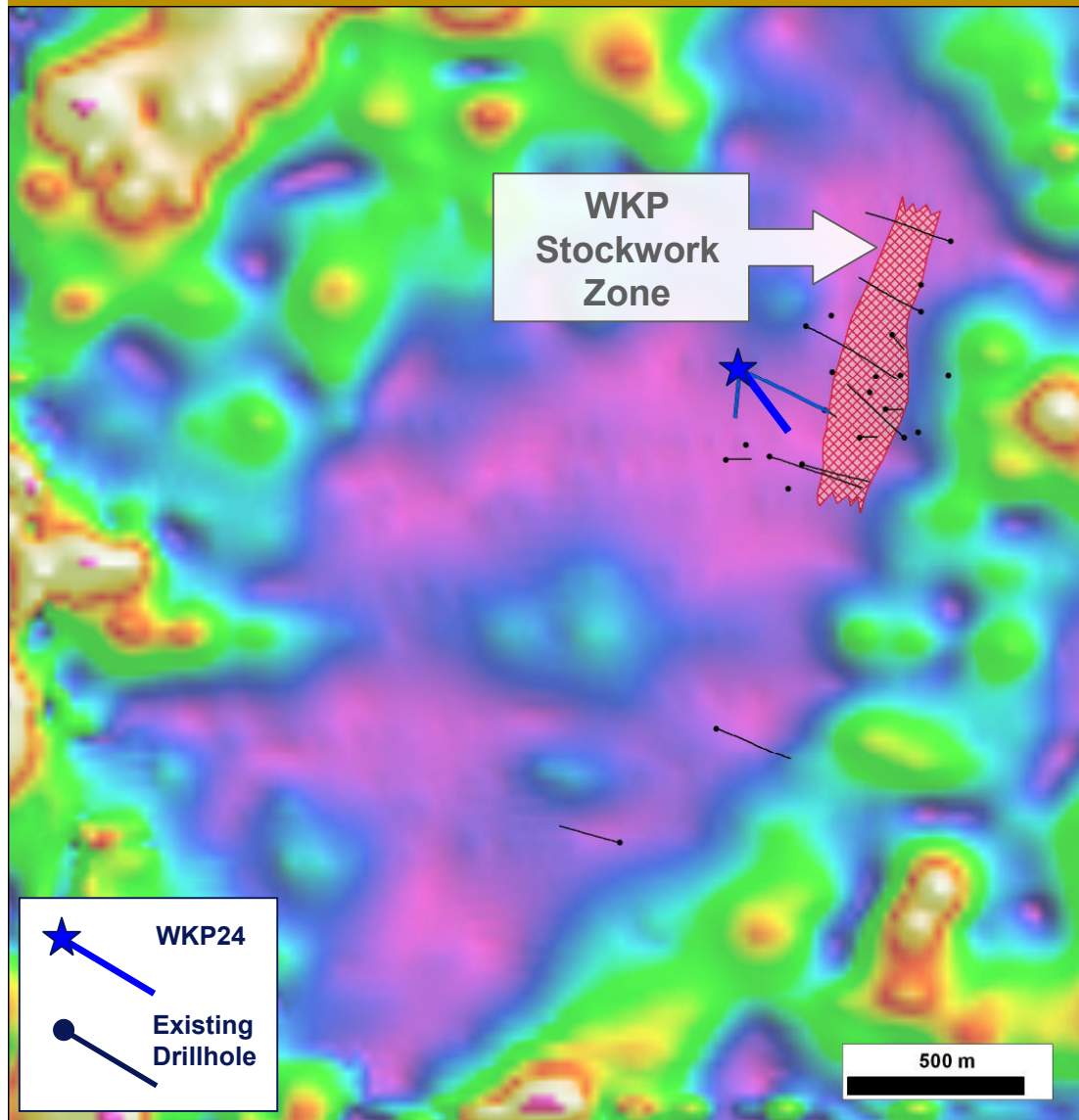
WKP:

Geology Re-interpretation



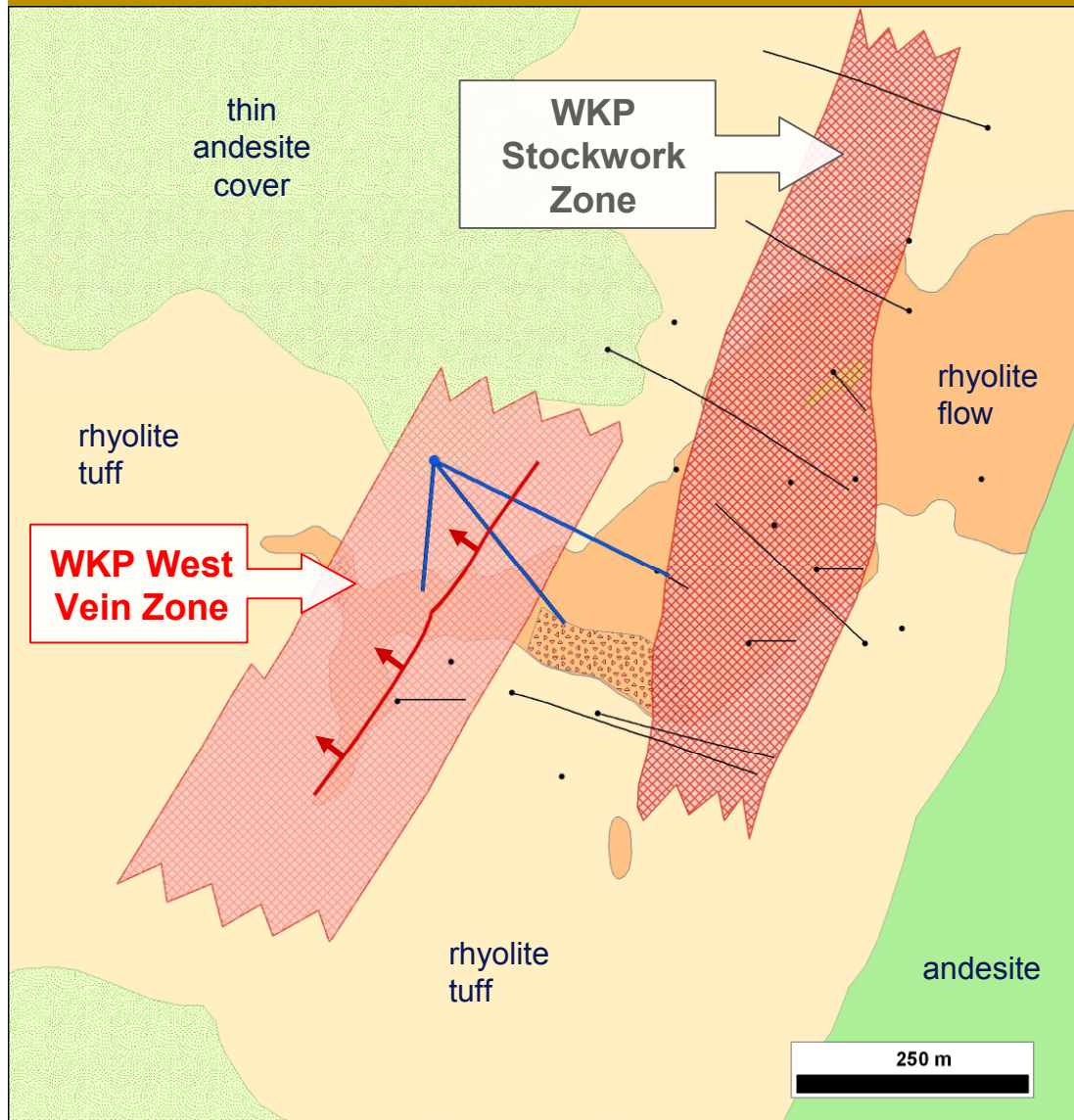
- Rhyolite domes mostly covered by rhyolite tuffs.
- Tuffaceous rhyolite autobreccia infills between separate domes.
- Post-mineral andesite flows & thin cover to NW, W & SW.

WKP: Analytic Signal Magnetics



- Demagnetised area defines extent of alteration.
- Shows alteration continues to southwest under thin andesite cover.

WKP: Geology Detail



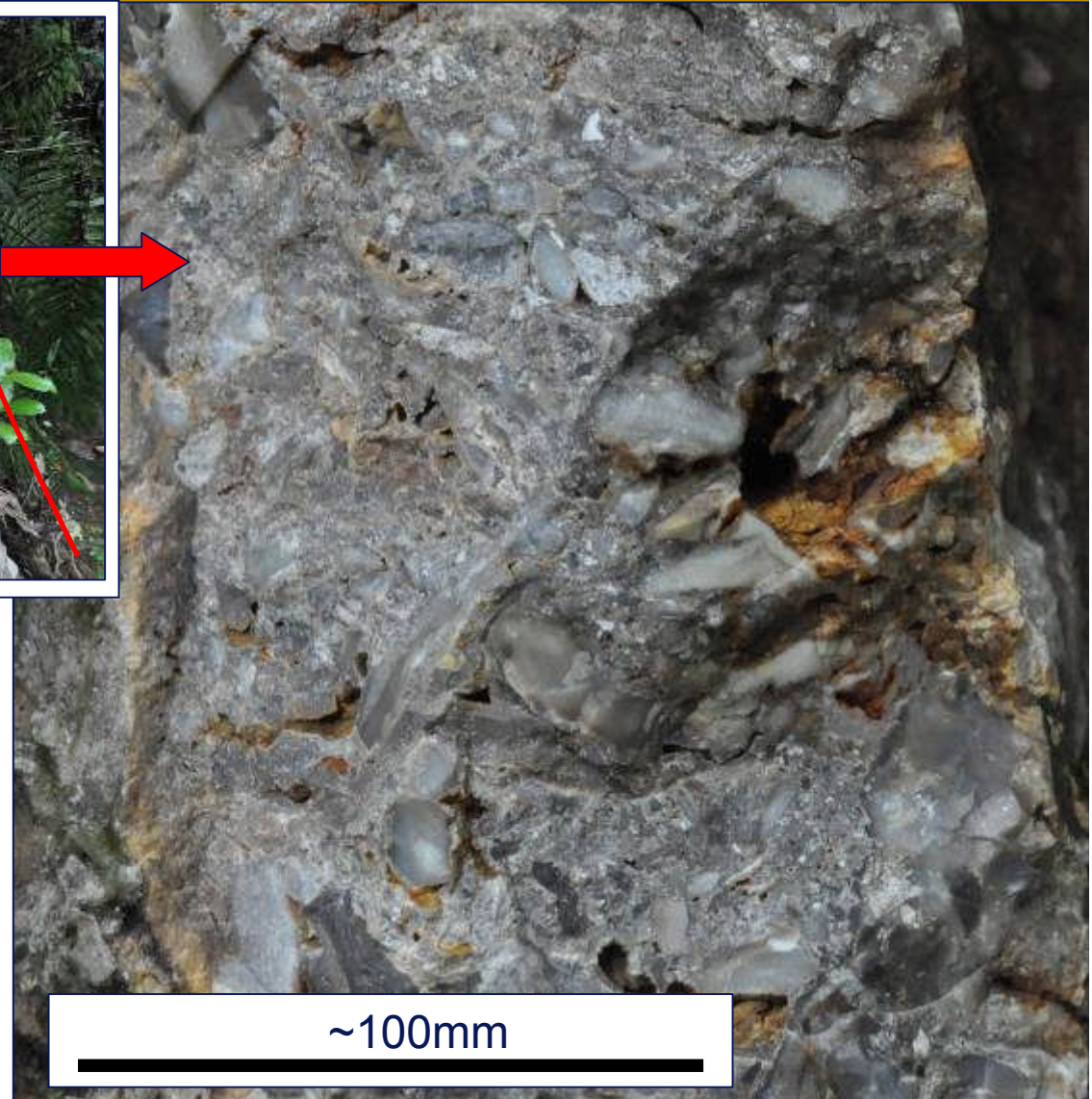
- Quartz vein zone at WKP West ~180m wide.
- Quartz veins in outcrop for 250m along strike.
- Quartz vein float occurring for 550m along strike.
- Identification of a mineralised master fault structure to west of previously explored stockwork zone.
- Fault on more prospective NE orientation, possibly controlling sheeted stockwork veins at N-NNE orientations.
- Structure not previously drill tested.

WKP West: Main Vein Outcrop



~2m

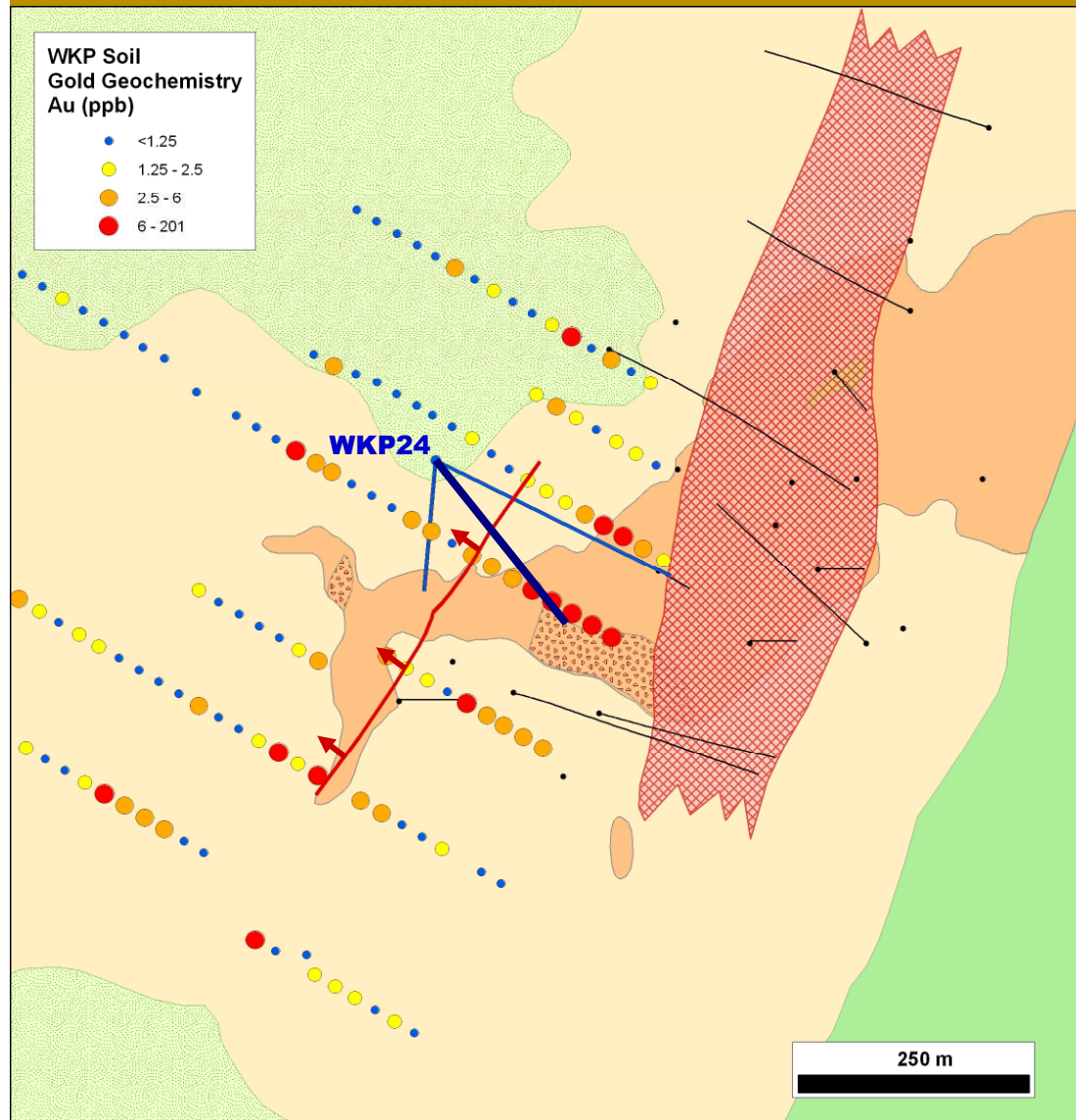
- Main WKP West Vein outcrop (view to N).
- 2m wide multiphase quartz vein.
- Chalcedonic + cherty + crystalline + rock flour veining.
- Silicified fault breccias.
- 200mm vein fragment breccia on FW margin.



~100mm

WKP:

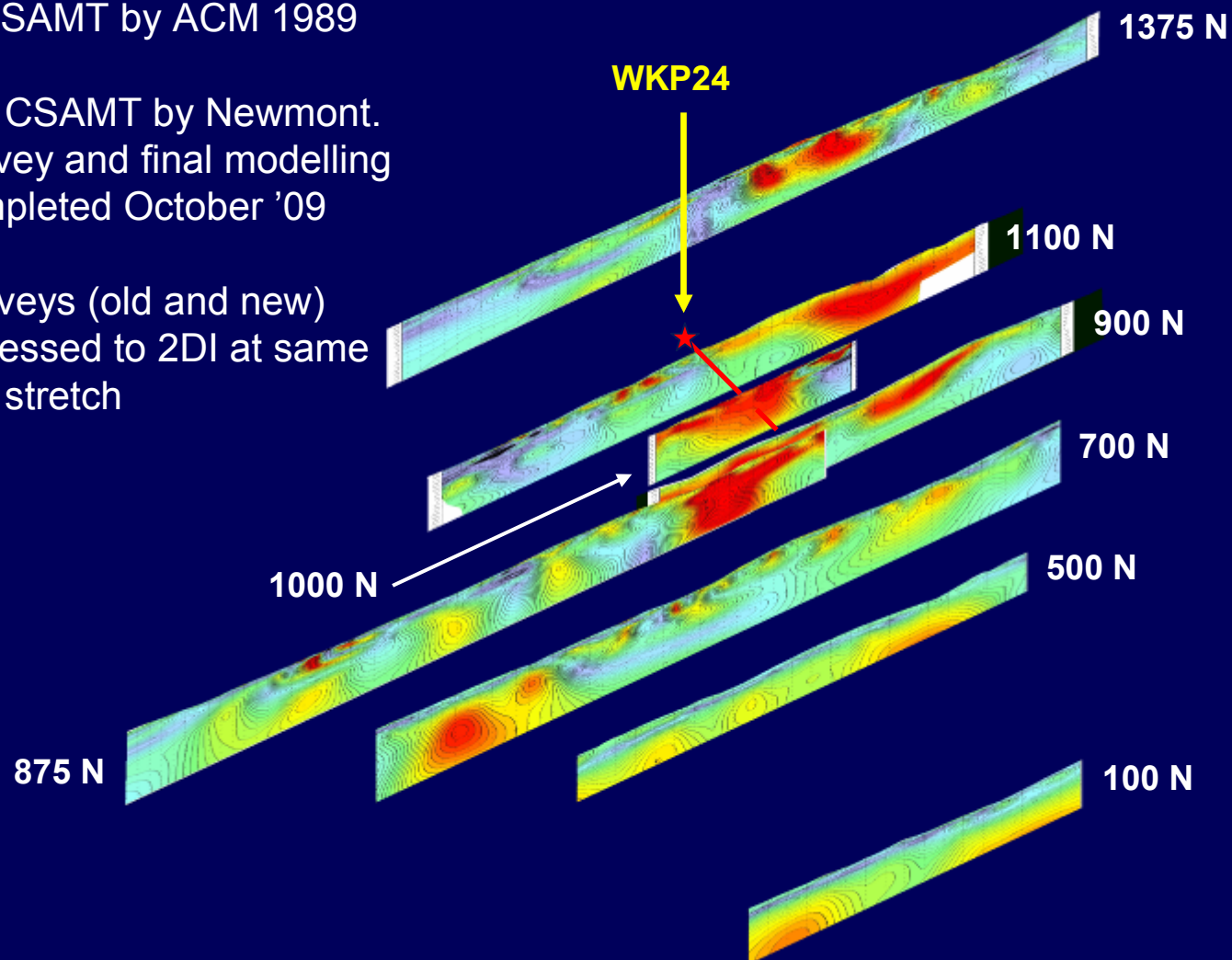
Soil Geochemistry - Gold



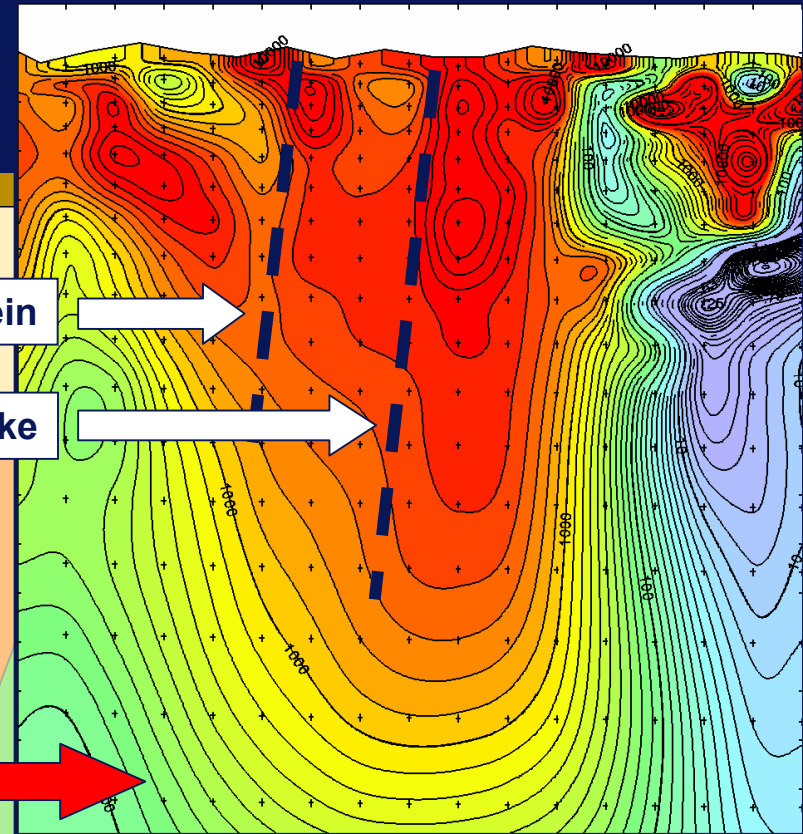
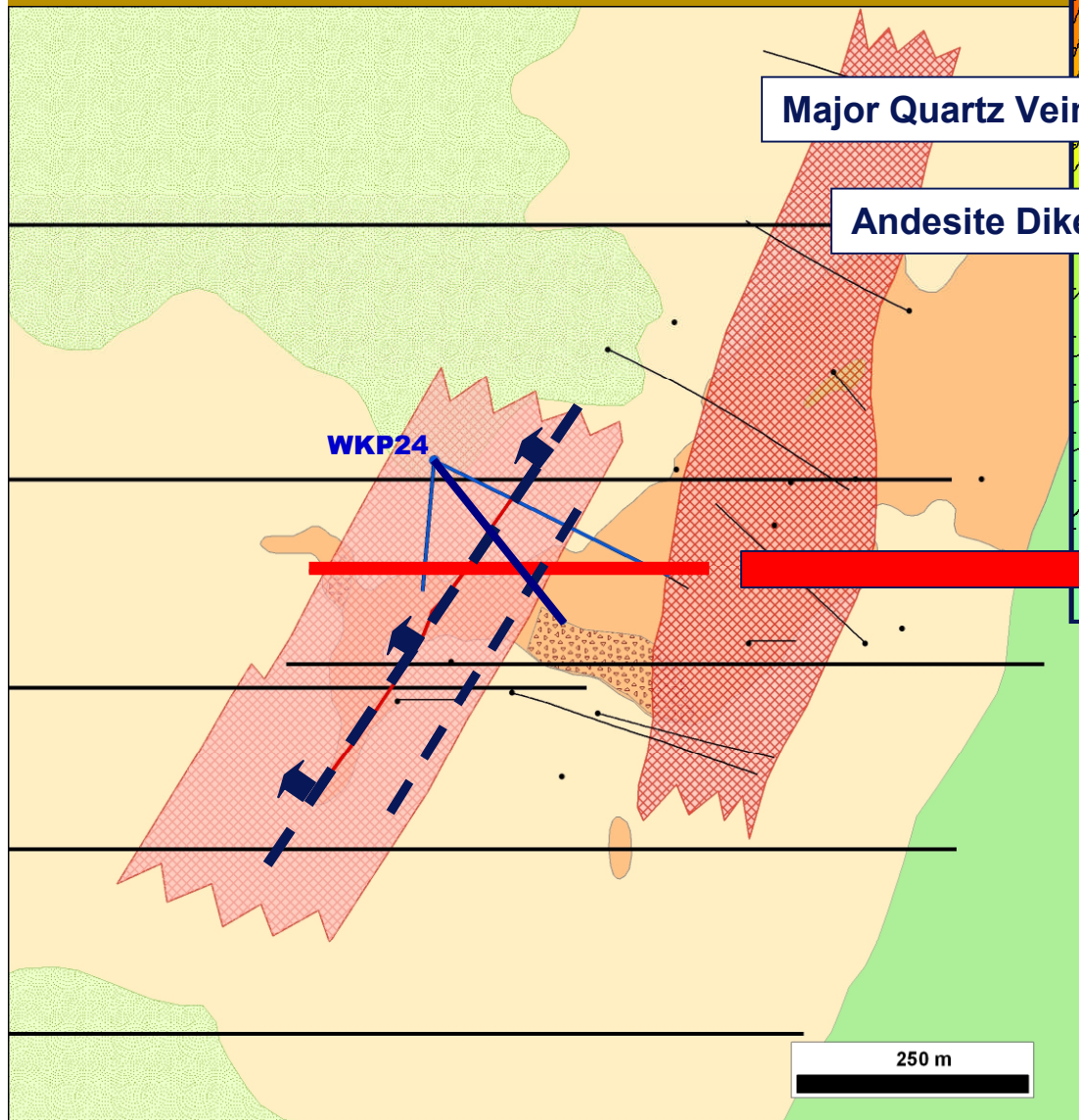
- Anomalous gold in soils on footwall of major vein structure.
- Maximum value 200 ppb Au.
- Anomalous zone ~600m strike length & open to south.

WKP: CSAMT Resistivity

- 3km CSAMT by ACM 1989
- 5.3km CSAMT by Newmont.
 - Survey and final modelling completed October '09
- All surveys (old and new) reprocessed to 2DI at same colour stretch

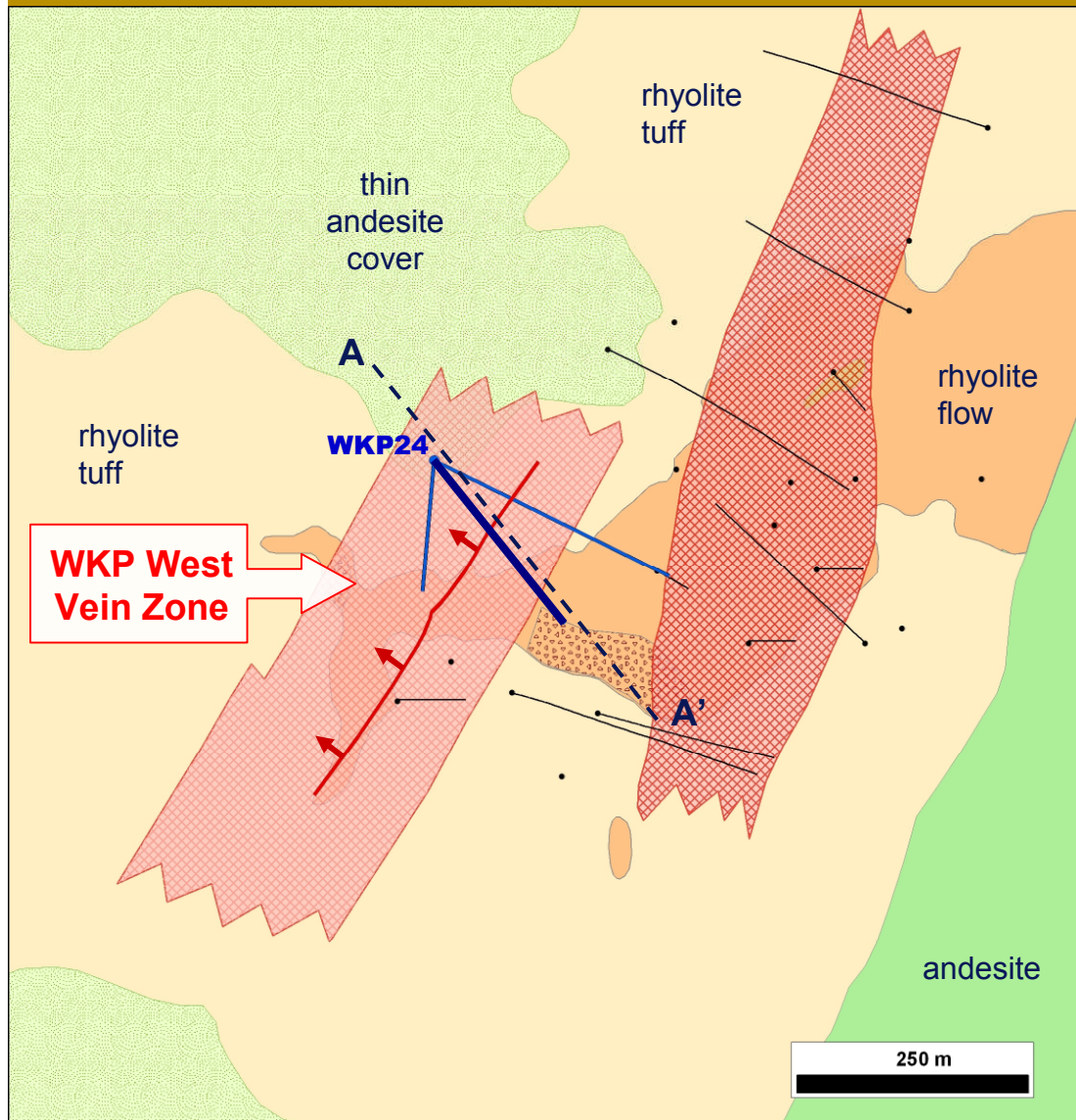


WKP: CSAMT Line 1000N

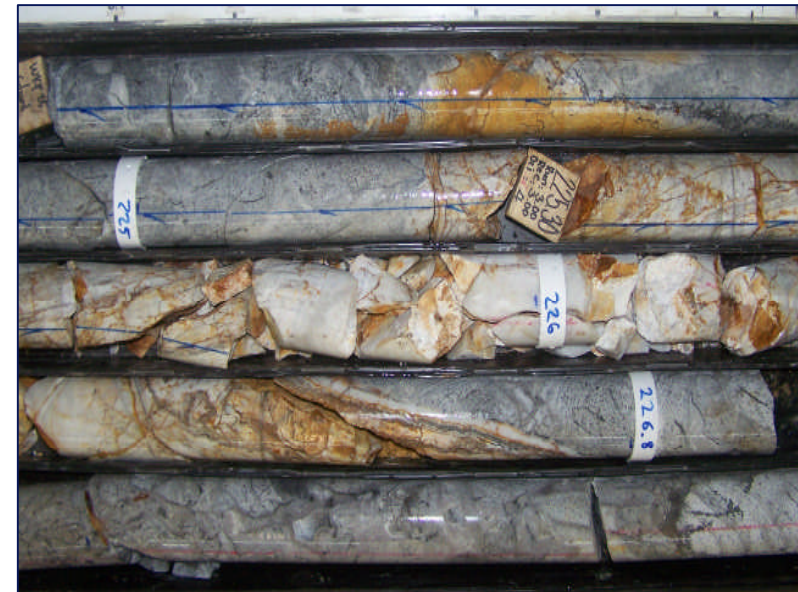


- Newmont CSAMT 2009
- Final 2D inversion model
- Very strongly resistive feature (1000 – 10k ohm-m).
- Strongly resistive feature correlates well with mapped quartz vein zone.

WKP District Exploration: Drill Hole WKP 24 Plan View



New mineralised trend defined by geologic mapping, CSAMT resistivity survey and drilling.



WKP District Exploration: Drill Hole WKP 24 Section

