

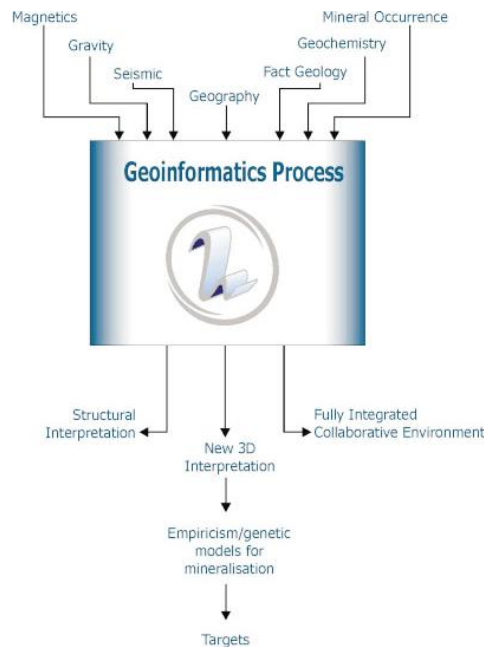
Glass Earth Limited

In Newsletters 1 and 2 Glass Earth outlined its exploration philosophy and the Geoinformatics Data Intervention Project which was the first stage in the evaluation of the CCVR (Coromandel-Central Volcanic Region). In this newsletter we report on the completion of the Data Intervention, summarise the results, and outline future plans.

Data Intervention Project: Stage 1 Completed

Geoinformatics Exploration Australia Pty Ltd (GEA) and Glass Earth Ltd (Glass Earth) have carried out a comprehensive process of data compilation and data processing, allowing new interpretations and definition of exploration targets.

The project involved a complete and comprehensive review and analysis of the geoscientific data pertinent to exploration in the project area. This included a data audit, validation, and organisation process; new interpretations of the geological, geophysical, and geochemical data; and the creation of a 3D computer based geology model. These elements allow the 3D analysis and visualisation of all of the geoscientific data pertinent to exploration. This process is referred to as the *Geoinformatics Process*, and was described in some detail in Newsletter 2.

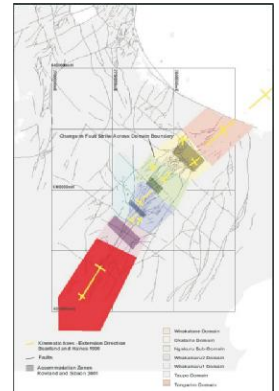


The Geoinformatics Process allows for:

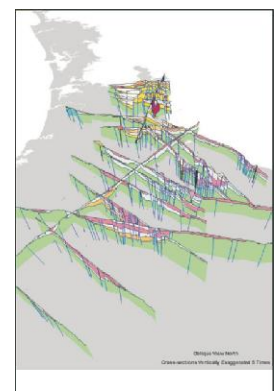
- additional data to be added at any time,
- changing priorities to be evaluated in the context of the geoscientific data, and
- competing or contrasting strategies (both economic and scientific) to be evaluated.

Glass Earth announces RTO on TSX

Glass Earth is undertaking a RTO (reverse take over) of a Canadian listed shell, BC Report Magazine Ltd, on the Toronto Stock Exchange: Venture Exchange. Contemporaneously, Glass Earth will secure private placement funding into BC Report (to be renamed Glass Earth).



Strain/structural domain partitioning in the TVZ



Cross section interpretations

HIGHLIGHTS

- Phase I data intervention is completed
- Targets identified
- Reverse take over of BC Report Magazine Ltd is announced



Data Intervention Project (continued)

The project started with largely unvalidated and unorganised research and government data, much of which was only in hardcopy/paper form, and thus very difficult to use or query.

Glass Earth is now in possession of a highly organised, computer-based, efficient database and associated query capability.

Central to the *Geoinformatics Process* are three main governing principles:

- comprehensive capture and validation of factual and interpretive data,
- computer aided analysis of the data using the most modern techniques, and
- presentation, visualisation, and evaluation of potential exploration targets using advanced 3D techniques.

An integral part of the project work flow involved advanced analysis of parts of the data to make it more useful and easily interpreted. For example, the aeromagnetic and gravity data were processed and reinterpreted. A 3D geological model was created to provide a 3D geometrical framework to aid visualisation and interpretation of the project data and results.

Finally, all of the data were integrated, queried, and visualised in a single, seamless digital environment, and utilised as a predictive framework for exploration for both gold and potential geothermal resources. Mineralisation in known areas was delineated and analysed, leading to new exploration and targeting criteria. Empirical, conceptual and statistical "weights of evidence" methods were applied to generate new targets for additional mineralisation, both at the near mine and regional scales. Finally, the exploration targets were prioritised and ranked.

A total of 51 ranked and scored gold exploration targets and 43 ranked and scored geothermal energy targets have been identified. All targets require further detailed work.

The probabilities of discovering a large, low-sulfidation epithermal gold deposit and/or geothermal field capable of economic energy production in the project area are good, given the geologic setting and styles of mineralization and geothermal resources that are present, and the historic lack of systematic exploration through the ash cover.

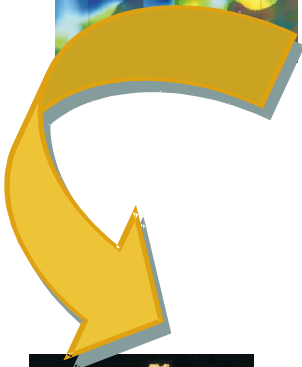
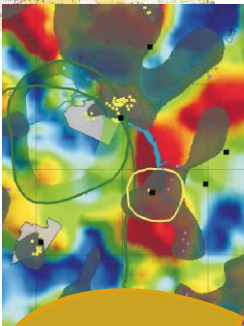
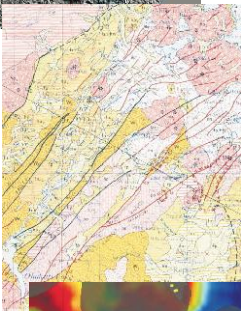
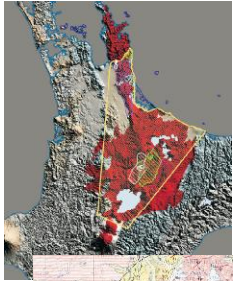
Recommendations for future exploration include work in three main areas:

- additional geophysical data collection and analysis,
- additional detailed geological interpretation of selected targets at approximately 1:20,000 scale,
- additional geochemical sampling and analysis.

Future Programme

Appropriate airborne geophysical methods, contractors and equipment are now being evaluated, in order to complete the detailed surveying in the approaching New Zealand summer.

Glass Earth staff will be attending the NZ branch AusIMM conference in September 2004, prior to embarking on a Canadian/European investor relations tour in September/October 2004.



Simon Henderson
Glass Earth Limited
PO Box 24-147
Wellington
New Zealand
PH: +64 4 4 471 1464
FAX: +64 4 4 471 1745
Email: simon.henderson
@glassearth.co.nz