



**Glass Earth**  
LIMITED

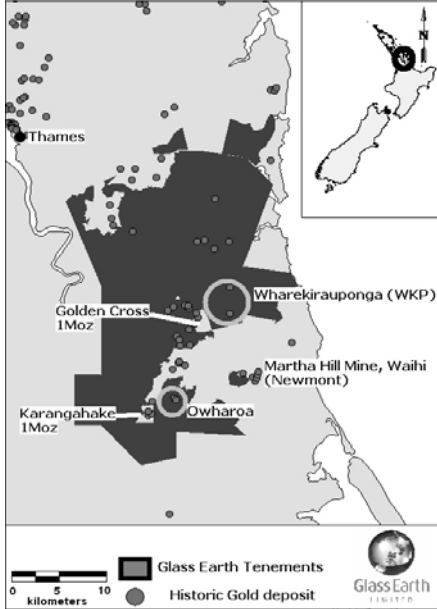
TSX-V: GEL

NZAX: GEL

INCORPORATED IN CANADA

NEWSLETTER 8

MARCH 2007



### HAURAKI REGION: JOINT VENTURE WITH NEWMONT WAIHI GOLD



Glass Earth and Newmont, 2<sup>nd</sup> largest gold mining company world-wide, formally entered into a JV on Glass Earth's extensive permit area in the Hauraki Region, North Island, New Zealand.

Glass Earth's Hauraki Region permit area lies immediately to the west and north of the Waihi/Martha Hill Mine owned and operated by Newmont.

15 advanced gold prospects lie in the Joint Venture area within trucking distance of Newmont's Waihi gold plant; several of the targets have significant gold intercepts, such as Wharekairauponga (WKP), DDH4 17.7m @ 4.0g/t Au (in 150m @ 0.93g/t Au).

The Agreement terms provide that Newmont may earn an initial 65% equity in a venture area, by expending NZ\$6.2m over 4 years.

← Glass Earth Hauraki tenements, under JV with Newmont

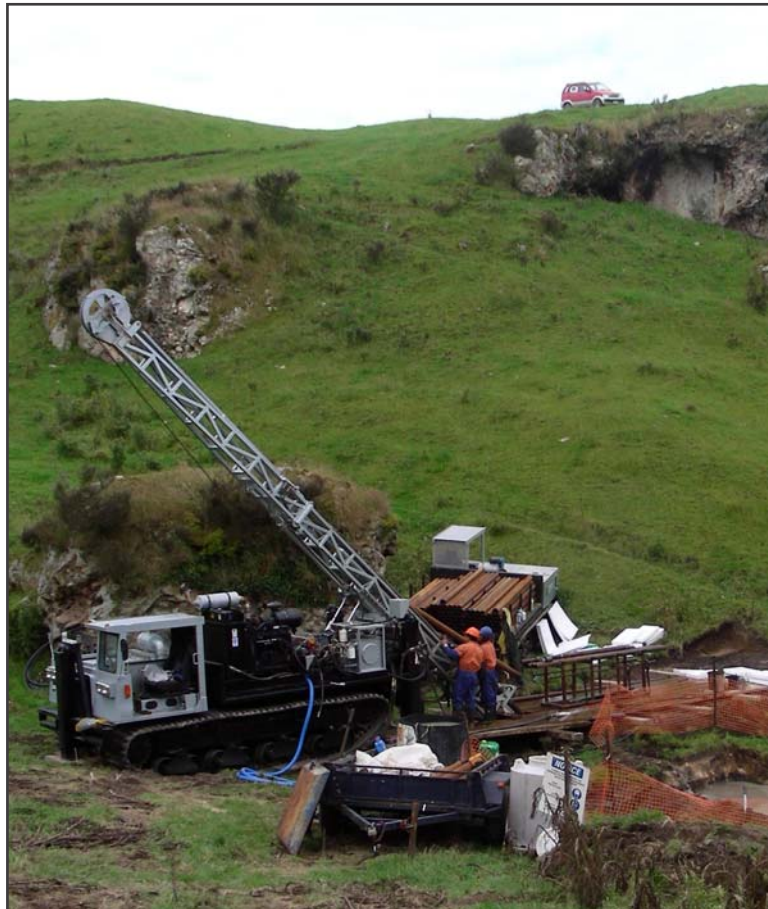
### TAUPO VOLCANIC ZONE

Glass Earth continues forensic evaluation of its highest ranked gold targets in the Taupo Volcanic Zone, with drilling on-going at Tahunaatara.

Additional targets such as Humphrey's Road, Thompsons, Pukemoremore... have completed pre-drilling evaluation.

Systematic diamond drilling of these targets will be continuous over the next 18 months.

drilling at Tahunaatara –  
drillhole #4 →



### HIGHLIGHTS

- GEL enters into a Joint Venture Agreement with Newmont Waihi Gold over GEL's Hauraki permits
- Completion of GEL's 4<sup>th</sup> drillhole at Tahunaatara
- Otago airborne geophysics survey: ~20% completed
- Otago Regional Council participates in the airborne survey: NZ\$1m
- The 2<sup>nd</sup> EM system and helicopter start work on the survey
- Glass Earth at PDAC 2007: room 106, booth #4029

### PDAC 2007

Glass Earth will be present at PDAC 2007 in Toronto, on March 4<sup>th</sup> to 7<sup>th</sup>. We will hold booth # 4029 in room 106, and will participate in the Exchange Forum: a presentation will be given by Simon Henderson on the 7<sup>th</sup>, at 9.20am in room 205B. Crown Minerals, the NZ government regulatory body governing prospecting, exploration and mining of minerals and petroleum in New Zealand, will also be present, at stand 1425.



**Glass Earth**  
LIMITED

TSX-V: GEL

NZAX: GEL

INCORPORATED IN CANADA

NEWSLETTER 8

MARCH 07 (p2)

## OTAGO AIRBORNE GEOPHYSICAL SURVEY – NZ SOUTH ISLAND



### OTAGO REGIONAL AIRBORNE SURVEY PROGRESS

Glass Earth's regional airborne geophysical survey over the Otago region kicked-off on January 15th 2007, in Mosgiel, 40km west of Dunedin, South Island, New Zealand.

The airborne geophysical survey is the largest survey of this nature ever flown in New Zealand. It has been designed to obtain a detailed geological understanding of the area allowing targeting of new areas with the potential for hardrock\* and/or alluvial gold.

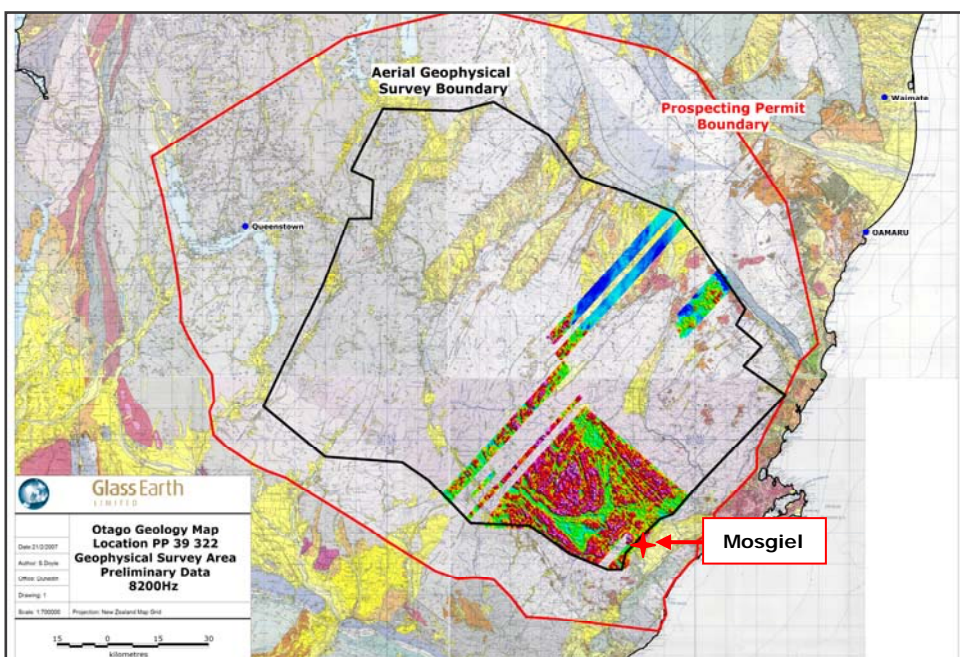
\* the area is host to the 7Moz Macraes gold mine (Oceana Gold Ltd), a mesothermal gold deposit

Two helicopters each towing a 9 metre Resolve™ drone are currently flying over the survey area in a series of

parallel lines, each 300m from the last. In total the two helicopters will fly almost 50,000 kilometres over the 4 months the survey is expected to take.

At 26.02.2007, 11,594 line kms had been flown (~17.9% of the initial survey), principally over the east and north-east portions of the survey area. The first 10,000 kms were flown by one helicopter and EM system – a second helicopter commenced on February 19<sup>th</sup>, accelerating the data collection.

Initial raw data views are encouraging; significant new structural and geological information is apparent in this snapshot of the survey.



### CONTACT DETAILS

**New Zealand**  
PO Box 24 109  
Level 7 TeRenCo House  
86-96 Victoria Street  
Wellington 6142

**Canada**  
Suite 500  
357 Bay St  
Toronto  
ON M5H 2T7

Ph: +64 4 903 4980      +1 416 368 7220  
Fax: +64 4 903 4985      +1 416 368 3259

[info@glasearth.co.nz](mailto:info@glasearth.co.nz)

[www.glasearthlimited.com](http://www.glasearthlimited.com)



### OTAGO REGIONAL COUNCIL NZ\$1M PARTICIPATION

The Otago Regional Council (ORC), the entity which promotes the sustainable development and enhancement of Otago's resources, is supporting Glass Earth's regional airborne geophysical survey, and has committed to contribute NZ\$1m toward the costs of the programme.

The ORC recognises the opportunity provided by Glass Earth through this survey, to fast-track the delineation of Otago's mineral and resource potential by accelerating the discovery of gold and untapped water resources, along with aggregates, coal, coal-bed methane, and qualification of soils, hazards and others.

